



 www.mideastint.com
 Email: info@mideastint.com
 tel: +218 947955555

**MEI** | **MIDDLE EAST
INTERNATIONAL**
الشركة الأوسط الدولي

20 wheel rims
245/40 R20



19 wheel rims
245/45 R19



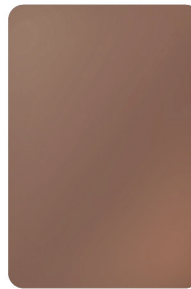
18 wheel rims
235/50 R18



Multiple interior options



Black



Brown



Gray/White



Red/White

Multiple color options



Gold Plus Purple



Purple



Gold Plus Brown



Brown



Blue

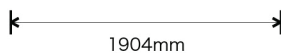


Gold



Black

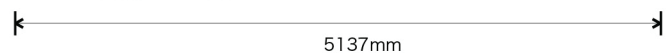
Ultra-large space



1904mm



1493mm



5137mm

Above-mentioned colors are only indicative. Products of some colors and materials are subject to availability.

List of features and specifications

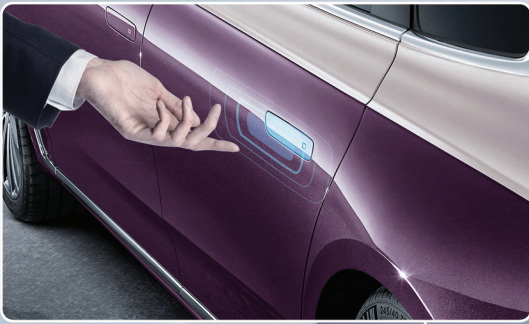
	Grade	Luxury	Comfort	Executive
Performance	Engine	2.0T Turbocharged Direct Injection	3.0T V6 Mechanically Supercharged Direct Injection	
	48V Boost Recuperation System	●	-	
	Maximum Torque (Nm)	380	400	
	Maximum Power Output (kw)	185	208	
	Maximum Power Output (ps)	250	281	
	Transmission	7DCT Shift by Wire		
	Electric Powered Steering (EPS)	●	●	●
	Front Suspension	Double wishbone independent front suspension with strut		
	Rear Suspension	Trapezoidal arm-type multi-link suspension with strut		
	Air Suspension	-	●	●
	Driving mode (Eco,Sporty, Comfort, Snow)	●	●	●
	Brakes Front & Rear	Disc		
	Tires	R20		
	Dimensions (mm) LxWxH	5137*1905*1493		
Wheelbase (mm)	3,060			
Safety	Lane Departure Warning (LDW)	●	●	●
	Speed Limitation Warning	●	●	●
	Forward Collision Warning (FCW)	●	●	●
	Lane Keep Assist (LKA)	●	●	●
	Driver Attention Alert (DAA)	●	●	●
	Blind Spot Detection (BSD)	●	●	●
	Advanced Cruise Control (SACC)	●	●	●
	Autonomous Emergency Brake (AEB)	●	●	●
	Around View Monitor 360 (AVM)	●	●	●
	Front/Rear Parking Sensor	●	●	●
	Front/Rear Side Airbags	●	●	●
	Traffic Sign Recognition	●	●	●
	Curtain Airbags	●	●	●
Exterior	Auto Trunk	●	●	●
	Matrix LED headlamp+Daytime running lights	●	●	●
	Adaptive Driving Beam (ADB)	●	●	●
	Hidden Door Handle	●	●	●
	Panoramic Sunroof	●	●	●
	Acoustic Glasses	●	●	●
	Electric Actuation Door	-	-	●
Interior	Memory (Driver Seat and Steering Wheel)	●	●	●
	Front and Rear Seats Ventilation	●	●	●
	Front and Rear Seats Massage	●	●	●
	Crystal Instrument Cluster 12.3 Inch	●	●	●
	Active Noise Control	●	●	●
	253-color Adjustable Interior Ambient Lighting	●	●	●
	Display Screen for Rear Passengers	-	-	●
	Independent Rear Seats (Two Rear Seats in Business version)	-	-	●
Convenience & Audio	Head Up Display (HUD)	●	●	●
	Auto Parking	●	●	●
	Engine Start-Stop Button	●	●	●
	Smart Entry (Front and Rear doors)	●	●	●
	Wireless Phone Charging	●	●	●
	Electric Parking Brake (EPB)	●	●	●
	Auto Hold	●	●	●
	Driving Recorder	●	●	●
	Automatic (Four zones)	●	●	●
	Audio Touch Screen 12.3 inch	●	●	●
	BOSE 12 Speaker	●	●	●

*Available in two tone colors (Comfort 3.0T/Executive 3.0T)

*Notes: ● Standard - None

*Disclaimer: Product specifications, configurations, and data are all subject to change without notice.

*The features and specifications listed here are indicative. For more information, please contact your sales consultants at the nearest stores.



Electronic courtesy lighting system: enjoying the comfort and dignity from brand-new technology.

With no physical keys, multiple remote-control functions and easy operation with mobile phone, "Soundless" electric-door gives you a refreshing and noiseless experience.



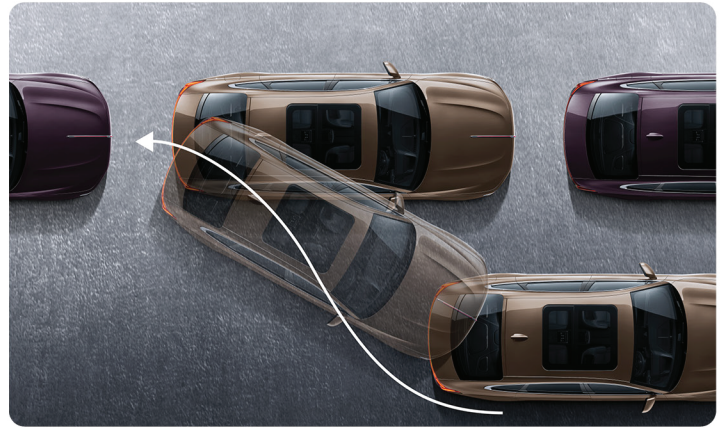
L2.5 autonomous driving: providing a guarantee to safe driving.

With New Hongqi's innovative intelligent connected technology: Smile 1.0, pioneering L2.5 autonomous driving in the segment and 19 driving-assist functions, you can easily change lanes and enjoy a worry-free safe driving.



Unbounded Vision leaves no blind areas.

The large-size high-resolution WHUD and wide-angle hi-fi streaming media rear view mirror provide a quintuple vision and the total protection, ensuring a worry-free riding experience anytime and anywhere.



Automatic Parking

The automatic parking system aims to enhance the comfort and safety of driving in constrained environments where much attention and experience is required to steer the car. The parking maneuver is achieved by means of coordinated control of the steering angle and speed which takes into account the actual situation in the environment to ensure collision-free motion within the available space.

An organically integration of the concept of "Noble · Ultimate · Idea" with the perfect experience.

Brand-new and diverse technologies provide total protection for both drivers and passengers.

The "Five-New" Hongqi features five innovations, setting a new benchmark for the C+ class luxury sedan market.

New Hongqi sets itself apart from the pack by its exclusive state-guest experience.



HONGQI
— since 1958 —
L I B Y A



The straight fall grille-framed front face shows an imposing visage.

New Hongqi's "Noble · Ultimate · Idea" design language, the "Silver Proportion" layout and innovative "Water Drop" profile radiate a majestic air of "torrents cascading down peaks and firm rocks standing amid wild waters", displaying an assertive style and a unique bearing.



The Big Dipper-shaped luxurious rear design presents a magnificent profile, graceful and trendy.

The artful arrangement of rear lights produces perfectly blended and soft lighting effects, providing a consoling and pleasant distraction from all the worldly worries.



Hongqi's exclusive "Prestige" lighting fully reveals the new nobility.

The omnidirectional lighting system, unique in the segment, provides a unmatched premium experience. As the vehicle is being unlocked, the "Dream Wing" key light is being lit up and the "Flag Wing" illuminated welcome carpet is rolling out. A considerate and courteous experience naturally attract every consumer in.



Scope to meet even the highest expectations.

Generously inviting. The roomy interior of the new H9 is where it shows its true greatness. It gives you the space to be yourself, while the outstanding comfort of the seats invites you to relax.

List of features and specifications

	Grade	Luxury	Comfort	Executive
Performance	Engine	2.0T Turbocharged Direct Injection	3.0T V6 Mechanically Supercharged Direct Injection	
	48V Boost Recuperation System	●	-	
	Maximum Torque (Nm)	380	400	
	Maximum Power Output (kw)	185	208	
	Maximum Power Output (ps)	250	281	
	Transmission	7DCT Shift by Wire		
	Electric Powered Steering (EPS)	●	●	●
	Front Suspension	Double wishbone independent front suspension with strut		
	Rear Suspension	Trapezoidal arm-type multi-link suspension with strut		
	Air Suspension	-	●	●
	Driving mode (Eco,Sporty, Comfort, Snow)	●	●	●
	Brakes Front & Rear	Disc		
	Tires	R20		
	Dimensions (mm) LxWxH	5137*1905*1493		
Wheelbase (mm)	3,060			
Safety	Lane Departure Warning (LDW)	●	●	●
	Speed Limitation Warning	●	●	●
	Forward Collision Warning (FCW)	●	●	●
	Lane Keep Assist (LKA)	●	●	●
	Driver Attention Alert (DAA)	●	●	●
	Blind Spot Detection (BSD)	●	●	●
	Advanced Cruise Control (SACC)	●	●	●
	Autonomous Emergency Brake (AEB)	●	●	●
	Around View Monitor 360 (AVM)	●	●	●
	Front/Rear Parking Sensor	●	●	●
	Front/Rear Side Airbags	●	●	●
	Traffic Sign Recognition	●	●	●
	Curtain Airbags	●	●	●
Exterior	Auto Trunk	●	●	●
	Matrix LED headlamp+Daytime running lights	●	●	●
	Adaptive Driving Beam (ADB)	●	●	●
	Hidden Door Handle	●	●	●
	Panoramic Sunroof	●	●	●
	Acoustic Glasses	●	●	●
	Electric Actuation Door	-	-	●
Interior	Memory (Driver Seat and Steering Wheel)	●	●	●
	Front and Rear Seats Ventilation	●	●	●
	Front and Rear Seats Massage	●	●	●
	Crystal Instrument Cluster 12.3 Inch	●	●	●
	Active Noise Control	●	●	●
	253-color Adjustable Interior Ambient Lighting	●	●	●
	Display Screen for Rear Passengers	-	-	●
	Independent Rear Seats (Two Rear Seats in Business version)	-	-	●
Convenience & Audio	Head Up Display (HUD)	●	●	●
	Auto Parking	●	●	●
	Engine Start-Stop Button	●	●	●
	Smart Entry (Front and Rear doors)	●	●	●
	Wireless Phone Charging	●	●	●
	Electric Parking Brake (EPB)	●	●	●
	Auto Hold	●	●	●
	Driving Recorder	●	●	●
	Automatic (Four zones)	●	●	●
	Audio Touch Screen 12.3 inch	●	●	●
	BOSE 12 Speaker	●	●	●

*Available in two tone colors (Comfort 3.0T/Executive 3.0T)

*Notes: ● Standard - None

*Disclaimer: Product specifications, configurations, and data are all subject to change without notice.

*The features and specifications listed here are indicative. For more information, please contact your sales consultants at the nearest stores.

"Oriental Artistic Mood" intelligent cabin reminds people of the idyllic beauty of the untrodden land.

New Hongqi's innovative "Oriental Artistic Mood" cabin features a surrounding central axle layout. The elegant central console is matched with water and mountain pattern decoration panels and thousand-color ambiance lighting. Once you sit inside, the fragrance will wrap you, allowing you to enjoy a music-hall level sound, as if in heaven on earth.



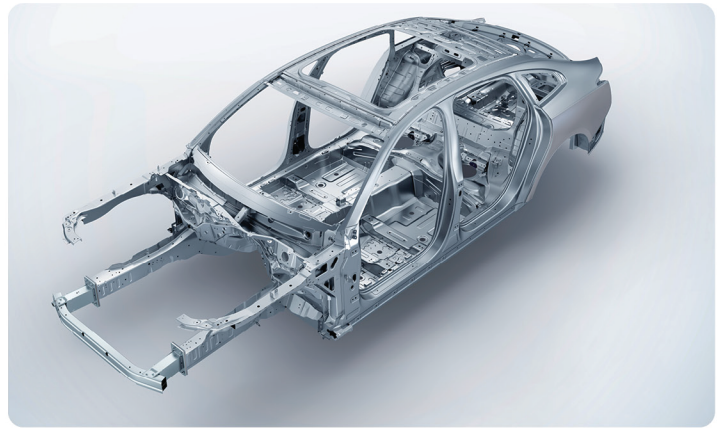
The "One-touch-operation" zero-gravity seat enables passengers to relax in a cozy position.

The user-friendly design of the right rear C seat provides an ample leeway, and the one-touch operation delivers the "zero-gravity" experience to the passenger, relaxing every inch of your strained muscle.



Premium longitudinal rear-drive chassis

The best-in-class premium longitudinal rear-drive chassis greatly enhances the manoeuvrability, making your driving more flexible and easier and delivering a high-quality experience.



Steel-cage-style bodywork guarantees a stable running through the toughest terrains.

The unique "H9" ultra-strong cage-style design and the 67.7% ratio of high-strength steel greatly enhance the safety of the bodywork, providing a solid guarantee to safe driving.



HONGQI



H9